



Apt 3 106 Napier Street, Sheffield S11 8HA

Saxton Mee

Lettings

Apt 3 106 Napier Street

PCM

£1,295 PCM

Be among the very first to call this brand-new development home, offering a collection of 1 and 2-bedroom luxury apartments in the highly desirable S11 postcode.

This is a rare opportunity to rent in one of Sheffield's most sought-after neighbourhoods.

Ideally located within 200 metres of local favourites including Waitrose, R1SE Yoga Studio (complete with ice baths, sauna, and a full class timetable), and the premium Nuffield Health fitness centre.

Ecclesall Road is just a short walk away, boasting an excellent selection of independent coffee shops, popular brunch spots, and lively bars.

Enjoy easy access to Endcliffe Park and the Peak District, perfect for scenic walks and outdoor escapes.

The development also benefits from excellent transport links to Sheffield City Centre, the universities, and the train station.

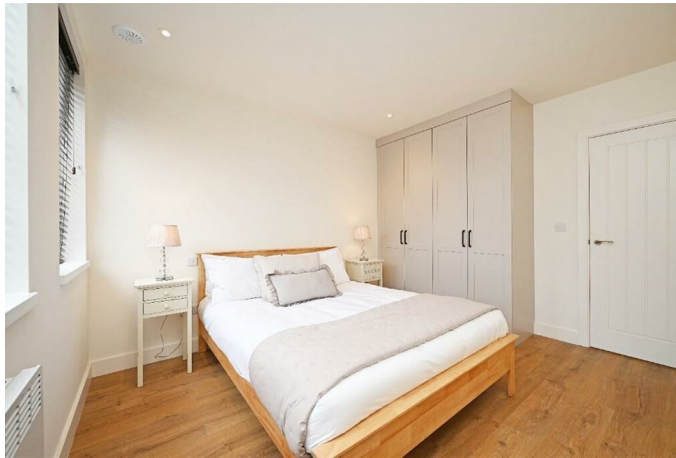
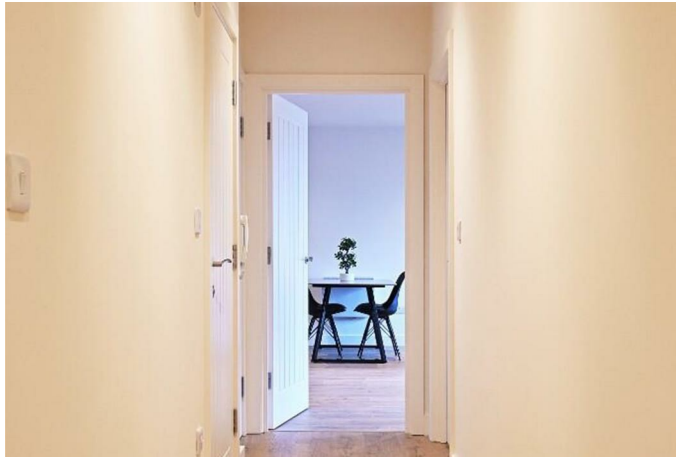
Each apartment has been thoughtfully designed with quality and comfort in mind, featuring bespoke Karl Benz kitchens with boiling water taps, spacious living areas flooded with natural light, king-sized bedrooms, and sleek, modern en-suite bathrooms.

These exceptional homes truly must be seen to be appreciated.

Please note: layouts may vary from photographs. Viewings are highly recommended.



- Karl Benz Kitchen
- Excellent Transport Links
- Prime location close to local amenities
- Boiling water tap
- Secure Parking
- Electric Heating System
- Short term lets available
- Secure door entry system
- Dressing area



While we endeavour to make our sales particulars fair, accurate and reliable, they are only a general guide to the property and, accordingly, if there is any point, which is of particular importance to you, please contact the relevant office. The Agents have not tested any apparatus, equipment, fittings or services and so cannot verify they are in working order. The buyer is advised to obtain verification. Please note all the measurement details are approximate and should not be relied upon as exact. All plans, floor plans and maps are for guidance purposes only and are not to scale. Under no circumstances should they be relied upon as exact or for use in planning carpets and other such fixtures, fittings or furnishings. YOUR HOME IS AT RISK IF YOU DO NOT KEEP UP REPAYMENTS ON A MORTGAGE OR OTHER LOAN SECURED ON IT. 'A Life Assurance policy may be requested.' 'Written Quotations of credit terms available on request.'

Banner Cross
T: 0114 268 3241
E: bannercross@saxtonmee.co.uk
www.saxtonmee.co.uk

Hathersage
T: 01433 650009
E: hathersage@saxtonmee.co.uk

Bakewell
T: 01629 815307
E: bakewell@saxtonmee.co.uk

Matlock
T: 01629 828250
E: matlock@saxtonmee.co.uk



Lettings